

# *Third Week Enrollment Analysis Spring 2017*

Page 1a,b Highlights

Page 2: Enrollment Summary

Page 3: Headcount Enrollment Trend

Page 4: Credit Hour Trend

Page 5: Student Profile

Page 6: New/Continuing Students

Page 7: New Student Profile

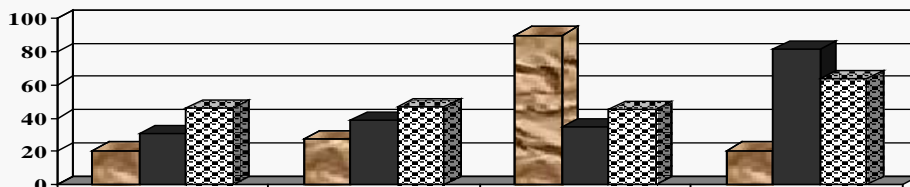
Page 8: Enrollment by Program

Page 9: Special Populations

Page 10: DCC South Enrollment Analysis

Page 11: DCC South Profile

Page 12: Reader Evaluation



2.22.17

*Dutchess Community College  
Office of Institutional Research, Planning & Assessment*

# Highlights

This report provides descriptive statistics and a trend analysis for the Spring 2017 enrollment at DCC. All comparisons are based on the Spring 2016 enrollment.

## Key Points

### **DCC Overall** (Undergraduates and High School Students combined)

- In Spring 2017, 7,550 students registered for credit courses at DCC, a decrease of 5.8% from Spring 2016 (8,018), (p.2). Total credit hour productivity (69,171) is down 6.7% from last spring (74,143). The current decrease reflects in part, the decrease in enrollment that occurred in fall.
- The Spring 2017 full time enrollment (3,251) is a decrease of 8.9% compared with full time enrollment of Spring 2016 (3,567). Spring 2017 full time credit hours (45,509) are down 8.3% from Spring 2016 (49,604).
- Overall part time headcount and credit hours have decreased. The part time enrollment for Spring 2017 is down overall by 3.4% (4,299 vs. 4,451). On campus part time enrollment is down 5.3% (2,324 vs. 2,455), while part time concurrent enrollment is down 2.0% (1,957 vs. 1,996). Total part time credit hours for Spring 2017 have decreased 3.6% (23,662 vs. 24,539). On campus part time credits are down 2.7% (15,422 vs. 15,855), while part time concurrent credits are down 5.8% (8,179 vs. 8,684).
- The average credits carried by full time students increased 0.7% to an average of 14.00. The part time credit load for on campus students has increased by 2.8% to 6.64. The average credit load for part time concurrent students has decreased by 3.9% to 4.18.

### **Undergraduate Students and High School Students**

- Page 6, distinguishes the DCC campus population (Undergraduate students) from the concurrent high school population. When looking at the traditional DCC undergraduate population:
  - Overall, the number of undergraduate students In Spring 2017 (5,562 non-high school students) decreased by 7.6% from Spring 2016 (6,019).
  - Overall full time enrollment decreased by 9.0%. A finer breakdown of the new student population reveals a 12.3% decrease in first-time, full time students this spring (150 vs. 171), and a 27.0 % decrease in full time transfer students (108 vs. 148). The continuing population decreased by 8.0% (2,964 vs. 3,221).
  - Overall part time undergraduate student enrollment (exclusive of high school students) indicates a decrease of 5.6% for Spring 2017. However the shift in part time enrollment is exclusively in the continuing population which decreased by 6.6% (2,110 vs. 2,260). The part time new and transfer population increased by 5.0% (230 vs. 219).
  - The overall high school student headcount enrollment decrease is 0.5% (1,986 vs. 1,996), (p.6).

# Highlights

## Student Profile and Curriculum Trends

- Among DCC's total student population, over 1/3 of the students identify themselves with a minority group (p.5). The New/Transfer undergraduate students (p.7), will continue to shift the diversity distribution of the on campus population over time, with the Hispanic/Latino group being the largest minority segment. Gender distribution has remained stable, with overall female population at 54%, compared to a male population of 46%. Students 22 and under increased to 76% of the student population, a reflection of the concurrent high school program impact on enrollment.
- Degree type information continues to reflect a shift between A.A.S. and A.S. programs in Spring 2017, (p.5). This change is a direct result of new students who want to enter the Nursing program and are now being matriculated into the General Studies program.
- The percent of students from Dutchess County has increased to 74% overall. Enrollment from surrounding counties has remains reasonably stable.
- Programs with the largest Spring 2017 enrollments are GSP (939), LAH (793), and BAT (560), (p.8). These same programs are the ones that received the most new full time students in Spring 2017: GSP (45), LAH (31) and BAT (30). Much of the increase in GSP enrollment continues to be a direct result of not allowing new full time students to enroll directly into the Nursing program unless very high standards are met.
- Most new students continue to matriculate into a program, (80%), (p.7)
- Special Populations decreased in terms of sections taught and credit hours generated, (p.9). The Verizon/Next Step program is now phased out. The overall decrease in high school credit hours is 4%. The PTech program is expanding at this time.
- Based on 3<sup>rd</sup> Week data, enrollment at DCC South has decreased 4.9% to 1,249 students. DCC South generated 7,167 credit hours in Spring 2017 (p.10), an 11.9% decrease from Spring 2016. Average credits per student at DCC South (5.74) decreased by 7.3%.
  - DCC South represented 10.4% of DCC's total credit hours, down from 11.0% in Spring 2016.

## Enrollment Summary

	Spring 2017	Spring 2016	% Change
FT Headcount	3,251	3,567	-8.9%
FT Credit Hours	45,509	49,604	-8.3%
FT Avg. Credits/Student	14.00	13.91	0.7%
PT (Non-High School) Headcount	2,324	2,455	-5.3%
PT (Non-High School) Credit Hours	15,422	15,855	-2.7%
PT (Non-High School) Avg. Credits/Student	6.64	6.46	2.8%
PT Concurrent/H.S. Headcount	1,957	1,996	-2.0%
PT Concurrent/H.S. Credit Hours	8,179	8,684	-5.8%
PT Concurrent/H.S. Avg. Credits/Student	4.18	4.35	-3.9%
PT Senior Auditor Headcount	18		
PT Senior Auditor Credit Hours	61		
PT Senior Auditor Avg. Credits/Student	3.39		
<b>Total Headcount</b>	<b>7,550</b>	<b>8,018</b>	<b>-5.8%</b>
<b>Total Credit Hours</b>	<b>69,171</b>	<b>74,143</b>	<b>-6.7%</b>

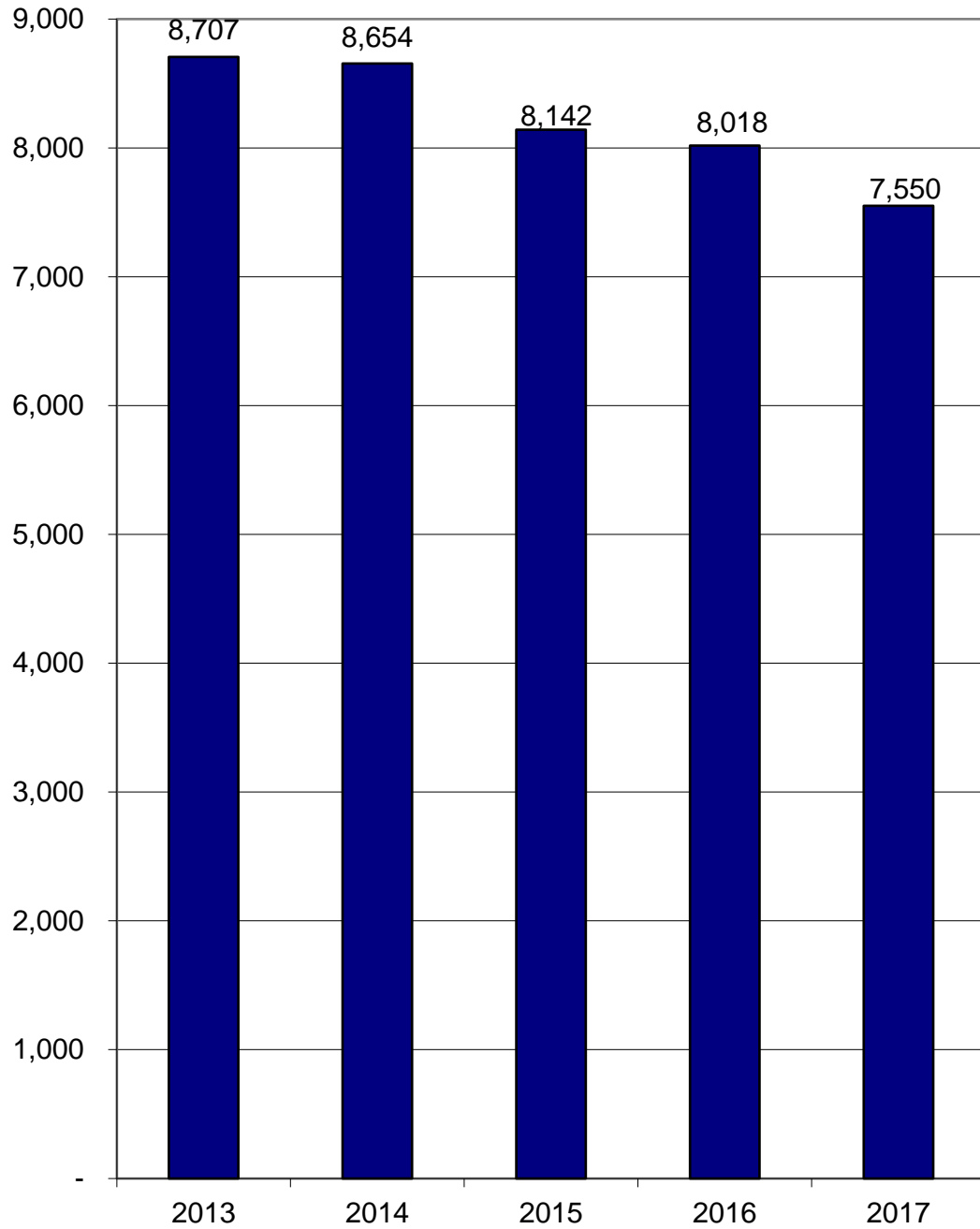
Source: 3rd week census data SOAYDTI download, 2-21-17

Office of Planning and Institutional Research, 2/22/17

y:\3rdweek\Spring 2017\enrollment summary.xls

# Headcount Enrollment Trend

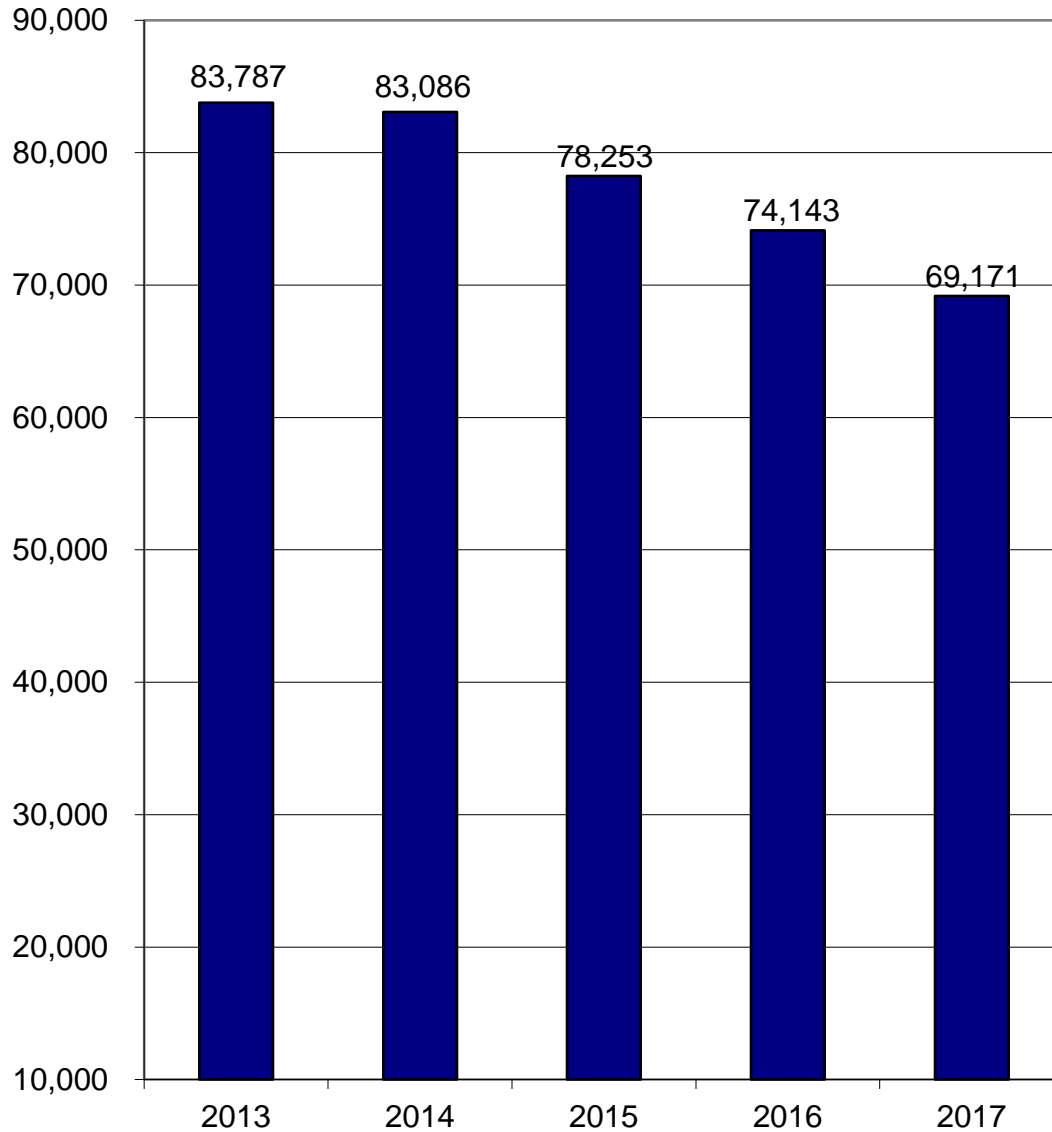
Spring 2013 - 2017



Source: 3rd week census data, ESS 2/21/17

## Credit Hour Trend

Spring 2013- 2017



Source: ESS 2/25/16  
Office of Institutional Research, Planning and Assessment, 2/23/17  
y:\3rdweek\spring 2017\credit hour trend.xls

## Student Profile

	Spring 2017				Spring 2016	
	Full-Time	Part-Time	Total	Percent	Total	Percent
<b>Total Enrollment</b>	<b>3,251</b>	<b>4,299</b>	<b>7,550</b>	<b>100%</b>	<b>8,018</b>	<b>100%</b>
<b><u>Gender</u></b>						
Male	1,571	1,868	3,439	46%	3,666	46%
Female	1,680	2,431	4,111	54%	4,352	54%
<b><u>Age</u></b>						
22 & under	2,774	2996	5,770	76%	6,044	75%
23-34	377	904	1,281	17%	1,407	18%
35-50	79	297	376	5%	426	5%
over 50	21	101	122	2%	140	2%
unknown	0	1	1	0%	1	0%
<b><u>Ethnicity</u></b>						
White	1,886	2,696	4,582	62%	4,960	63%
Black	430	436	866	12%	948	12%
Hispanic	666	774	1,440	20%	1,490	19%
Asian	75	167	242	3%	222	3%
Native American	5	8	13	0%	15	0%
Hawaiian or Other Pacific Islander	3	3	6	0%	9	0%
2 or More Ethnicity/Non-Hispanic	127	126	253	3%	247	3%
unknown	59	89	148	*	127	*
<b><u>Degree Type</u></b>						
A.A.	563	251	814	11%	879	11%
A.S.	2,291	1,266	3,557	47%	3,701	46%
A.A.S.	336	447	783	11%	935	12%
Certificate	23	70	93	1%	116	2%
Non-matriculated Undergraduates	9	308	317	4%	391	5%
High School Non-Matric	29	1,957	1,986	26%	1,996	25%
<b><u>County of Residence</u></b>						
Bronx	75	4	79	1%	85	1%
Dutchess	2,281	3,339	5,620	74%	5,878	73%
Orange	185	121	306	4%	364	5%
Putnam	210	540	750	10%	822	10%
Ulster	236	199	435	6%	486	6%
Westchester	83	30	113	1%	136	2%
other N.Y.	130	139	269	3%	205	3%
outside N.Y.S.	23	9	32	0%	21	0%
out of country	28	18	46	1%	21	0%

Due to rounding, percentages may not add to 100%

\* Excluded from percentage calculations.

Office of Institutional Research, Planning & Assessment, 2/23/17

Source: 3rd week census data, SOAYDTI, 2/21/17

## New/Continuing Students

	Spring 2017	Spring 2016	% Change
<b>Total Headcount</b>	<b>7,548 **</b>	<b>8,015</b>	<b>-5.8%</b>
<hr/>			
<b>I. Undergraduate Students</b>	<b>5,562</b>	<b>6,019</b>	<b>-7.6%</b>
<b>A. Full-Time</b>	<b>3,222</b>	<b>3,540</b>	<b>-9.0%</b>
1. New	258	319	-19.1%
a. First-Time	150	171	-12.3%
b. Transfer	108	148	-27.0%
2. Continuing	2,964	3,221	-8.0%
<b>B. Part-Time</b>	<b>2,340</b>	<b>2,479</b>	<b>-5.6%</b>
1. New	230	219	5.0%
a. First-Time	176	167	5.4%
b. Transfer	54	52	3.8%
2. Continuing	2,110	2,260	-6.6%
<hr/>			
<b>II. High School Students*</b>	<b>1,986</b>	<b>1,996</b>	<b>-0.5%</b>
<b>A. Full-Time</b>	<b>29</b>	<b>27</b>	<b>7.4%</b>
<b>B. Part-Time</b>	<b>1,957</b>	<b>1,969</b>	<b>-0.6%</b>

\* student is currently enrolled in high school.

\*\* Does not include cross registered students

Source: 3rd week census data, SOAYDTI 2/21/2017

Office of Planning & Institutional Research, 2/22/17

y:\3rdweek\spring 2017\new-continuing.xls



## New/Transfer Student Profile\*

	Spring 2017		Spring 2016		% Change
<b><u>Total Headcount</u></b>	<b>486</b>		<b>538</b>		<b>-10%</b>
<b><u>Gender</u></b>					
Male	232	(48%)	246	(46%)	-6%
Female	254	(52%)	292	(54%)	-13%
<b><u>Age</u></b>					
22 & younger	324	(67%)	359	(67%)	-10%
23-34	124	(26%)	129	(24%)	-4%
35-50	30	(6%)	39	(7%)	-23%
over 50	8	(1%)	11	(2%)	-27%
<b><u>Ethnicity</u></b>					
White	246	(53%)	264	(55%)	-7%
Black	86	(18%)	93	(19%)	-8%
Hispanic	102	(22%)	99	(21%)	3%
Asian	9	(2%)	11	(2%)	-18%
Native American	1	(0%)	2	(0%)	-50%
Hawaiian or Other Pacific Islander	0	(0%)	1	(0%)	-100%
2 or More Ethnicity/Non-Hispanic	22	(5%)	16	(3%)	38%
unknown	20	-	52	-	-62%
<b><u>Degree Type</u></b>					
A.A.	46	(9%)	60	(11%)	-23%
A.S.	255	(52%)	282	(52%)	-10%
A.A.S.	81	(17%)	68	(13%)	19%
Certificate	9	(2%)	15	(3%)	-40%
Non-matriculated	95	(20%)	113	(21%)	-16%
<b><u>County of Residence</u></b>					
Bronx	9	(2%)	13	(3%)	-31%
Dutchess	311	(64%)	352	(65%)	-12%
Orange	36	(7%)	43	(8%)	-16%
Putnam	34	(7%)	40	(8%)	-15%
Ulster	49	(10%)	42	(8%)	17%
Westchester	5	(1%)	11	(2%)	-55%
other N.Y.	27	(6%)	28	(5%)	-4%
outside N.Y.S.	10	(2%)	7	(1%)	43%
outside country	5	(1%)	2	(0%)	150%

\* note: does not include new high school students, includes transfer students.

Source: ESS file run 2/21/17

Office of Institutional Research, Planning & Assessment, 2/22/17

y:\3rdweek\spring 2017\new.xls

## Enrollment by Program

	<u>Full-Time</u>	<u>Part-Time</u>	<u>2017 Total</u>	<u>2016 Total</u>	<u>1 Year % Change</u>	<u>Full-Time New*</u>
<b><u>ARTS &amp; COMMUNICATIONS</u></b>	<u>312</u>	<u>130</u>	<u>442</u>	<u>464</u>	<u>-5%</u>	<u>15</u>
Art Studies Program (ASP)	10	5	15	18	-17%	1
Communications (COM)	146	59	205	217	-6%	7
Music Performance (Cert) (MPC)	1	3	4	7	-43%	0
Performing Arts (PFA)	51	19	70	76	-8%	2
Visual Arts Transfer (VAT)	104	44	148	146	1%	5
<b><u>BUSINESS TECHNOLOGIES</u></b>	<u>477</u>	<u>296</u>	<u>773</u>	<u>868</u>	<u>-11%</u>	<u>53</u>
Accounting (ACC)	15	13	28	36	-22%	4
Bookkeeping (Cert) (BOK)	1	5	6	10	-40%	0
Bus Admin-Career (BUS)	58	69	127	144	-12%	15
Bus Admin-Transfer (BAT)	381	179	560	614	-9%	30
Paralegal (AAS) (PAL)	21	25	46	57	-19%	4
Paralegal (Cert) (PLL)	1	5	6	7	-14%	0
<b><u>ENGINEERING, COMPUTER TECHNOLOGIES</u></b>	<u>270</u>	<u>153</u>	<u>423</u>	<u>481</u>	<u>-12%</u>	<u>19</u>
Air Conditioning & Refrig Tech (Cert) (ACR)	4	9	13	8	63%	0
Architectural Technology (ARC)	32	11	43	49	-12%	4
Aviation Science Pilot (AVI)	24	7	31	34	-9%	1
Aviation Management (AVM)	8	0	8	19	-58%	0
Computer Info Systems (CIS)	44	28	72	74	-3%	5
C++/Java Advanced Programming (Cert)(CJC)	0	0	0	2	-100%	0
Computer Networking (Cert) (CNC)	1	4	5	6	-17%	0
Computer Software Support (Cert) (SSC)	0	3	3	5	-40%	0
Web Administration (Cert) (WAC)	0	2	2	3	-33%	0
Information Management (INM)	32	14	46	51	-10%	1
Construction Technology (CNS)	15	11	26	23	13%	3
Electrical Technology (ELT)	29	21	50	61	-18%	3
Engineering Science (ENR)	81	43	124	135	-8%	2
Telecommunications Tech.-Verizon (TEN)	0	0	0	11	-100%	0
<b><u>LIBERAL ARTS &amp; SCIENCE</u></b>	<u>1,580</u>	<u>937</u>	<u>2,517</u>	<u>2,580</u>	<u>-2%</u>	<u>119</u>
Computer Science (CPS)	57	32	89	83	7%	6
Exercise Science & Wellness (ESW)	76	60	136	194	-30%	8
General Studies Program (GSP)	510	429	939	845	11%	45
Humanities & Social Sciences (LAH)	547	246	793	863	-8%	31
Mathematics (LAM)	16	5	21	16	31%	1
Science (LAX)	218	103	321	363	-12%	17
Elementary Ed. birth-6 (EED)	80	35	115	118	-3%	3
Childhood Education gr. 1-6 (EDC)	0	1	1	2	-50%	0
Adolescent Education gr.7-12 (EDB, EDX etc.)	76	26	102	96	6%	8
<b><u>HEALTH TECHNOLOGIES</u></b>	<u>74</u>	<u>230</u>	<u>304</u>	<u>403</u>	<u>-25%</u>	<u>9</u>
Emergency Medical Technician - paramedic (PAR)	15	18	33	30	10%	2
Fire and Occupational Safety (FIR)	18	3	21	24	-13%	1
Fire Protection Technology (FPT)	2	5	7	11	-36%	0
Medical Laboratory Technology (MLT)	22	21	43	55	-22%	4
Nursing (NUR)	6	154	160	231	-31%	0
Paramedic(Cert)(PRR)	0	0	0	1	0%	0
Phlebotomist (Cert) (PDC)	11	29	40	51	-22%	2
<b><u>HUMAN SERVICES</u></b>	<u>500</u>	<u>288</u>	<u>788</u>	<u>835</u>	<u>-6%</u>	<u>43</u>
Chemical Dependency Counseling (Cert) (CDC)	2	6	8	11	-27%	0
Child Care: Direct Care (Cert) (DRC)	1	3	4	1	300%	0
Child Care (CHC)	1	6	7	7	0%	0
Criminal Justice-Public and Private Security (CRJ)	25	27	52	59	-12%	5
Criminal Justice- Transfer (AS) (CRT)	216	82	298	312	-4%	17
Early Childhood (ECH)	41	30	71	66	8%	0
Early Childhood Caregiver (Cert) (ECC)	1	1	2	4	-50%	0
Human Services (HMS)	203	125	328	354	-7%	18
Mental Health Assistant (CMH)	10	8	18	21	-14%	3
<b><u>NON-MATRICULATED UNDERGRADUATES</u></b>	<u>9</u>	<u>308</u>	<u>317</u>	<u>391</u>	<u>-19%</u>	
<b><u>HIGH SCHOOL NON-MATRICULATED</u></b>	<u>29</u>	<u>1,957</u>	<u>1,986</u>	<u>1,996</u>	<u>-1%</u>	
<b>Total Enrollment</b>	<b>3,251</b>	<b>4,299</b>	<b>7,550</b>	<b>8,018</b>	<b>-5.8%</b>	<b>258</b>

Source: 3rd week census data, 2/21/17

\* new includes transfers

## Enrollments: High Schools and Other Special Populations

Location	Sections Taught		Course Registrations		Credit Hours		% Change Credit Hours
	Spring 2017	Spring 2016	Spring 2017	Spring 2016	Spring 2017	Spring 2016	
<u>High Schools:</u>							
Arlington High School	19	17	457	447	1,413	1,390	2%
Beacon High School	10	11	162	290	486	870	-44%
Carmel High School	14	14	326	326	1,027	1,026	0%
Dover High School	3	4	71	81	213	243	-12%
Faith Christian Academy	1	1	16	6	48	18	167%
Franklin D. Roosevelt High School	9	9	182	178	546	534	2%
Haldane High School	1	4	18	15	72	60	20%
John Jay High School	15	14	332	286	1,096	954	15%
Mahopac High School	3	4	56	69	168	207	-19%
Millbrook High School	2	2	33	38	117	133	-12%
Our Lady of Lourdes High School	10	10	218	264	654	792	-17%
Pawling High School	1	1	22	6	66	18	267%
Poughkeepsie High School	2	3	34	47	102	141	-28%
Putnam Valley High School	4	3	62	63	216	205	5%
Red Hook High School	1	1	16	15	48	45	7%
Roy C. Ketcham High School	16	17	378	399	1,205	1,289	-7%
Spackenkill High School	3	2	68	39	245	156	57%
Stissing Mountain High School	3	2	43	27	148	95	-24%
Webutuck High School	1	1	24	24	72	72	0%
<b>Sub-total: High School</b>	<b>118</b>	<b>120</b>	<b>2,518</b>	<b>2,620</b>	<b>7,942</b>	<b>8,248</b>	<b>-4%</b>
<u>Other:</u>							
P-Tech Poughkeepsie High School	3	1	49	12	85	12	608%
Verizon/Next Step	0	2	0	22	0	77	-100%
<b>Sub-total: Other</b>	<b>3</b>	<b>3</b>	<b>49</b>	<b>34</b>	<b>85</b>	<b>89</b>	<b>-4%</b>
<b>Total: High Schools and Other Special Populations</b>	<b>121</b>	<b>123</b>	<b>2,567</b>	<b>2,654</b>	<b>8,027</b>	<b>8,337</b>	<b>-4%</b>

note: as of the 3rd week, not all registrations were in the system.

Sources: High School counts from billing spreadsheet from Academic Affairs; P-Tech counts from Argos ST00210 - Course section report for IR

## DCC South Enrollment Analysis

	Spring 2017	Spring 2016	% Change
Total Sections Offered at DCC South	117	120	-3%
# Students Taking at least one Course at DCC South	1,249	1,314	-4.9%
# Students Taking Courses at both DCC South and on campus	811	790	2.7%
Total Credit Hours Generated at DCC South	7,167	8,138	-11.9%
Average Credits per student at DCC South	5.74	6.19	-7.3%
% of total DCC credits generated at DCC South	10.4%	11.0%	

Source: 3rd week census data Argos ST0033, section total: ST0097, 2/22/17  
 Office of Institutional Research, Planning & Assessment, 2/22/17  
 y:\3rdweek\spring 2017\dcc south sections.xls

## DCC South Profile

### Students Taking Courses at DCC South

	Spring 2017		Spring 2016		% Change
<b><u>All Students</u></b>	1,249		1,314		-4.9%
<b><u>Gender</u></b>					
Male	563	(45%)	601	(46%)	-6%
Female	686	(55%)	713	(54%)	-4%
<b><u>Age</u></b>					
22 & under	823	(66%)	851	(65%)	-3%
23-34	309	(25%)	317	(24%)	-3%
35-50	94	(7%)	109	(8%)	-14%
over 50	23	(2%)	37	(3%)	-38%
<b><u>Ethnicity</u></b>					
White	763	(62%)	820	(63%)	-7%
Black	130	(11%)	134	(10%)	-3%
Hispanic	266	(22%)	269	(21%)	-1%
Asian	28	(2%)	33	(3%)	-15%
Native American	1	(0%)	3	(0%)	-67%
Hawaiian or Other Pacific Islander	0	(0%)	0	(0%)	-
2 or More Ethnicity/Non-Hispanic	41	(3%)	34	(3%)	21%
unknown	20	*	21	*	*
<b><u>Degree Type</u></b>					
A.A.	177	(14%)	193	(15%)	-8%
A.S.	830	(67%)	798	(61%)	4%
A.A.S.	154	(12%)	190	(15%)	-19%
certificate	14	(1%)	16	(1%)	-13%
non-matriculated	60	(5%)	100	(6%)	-40%
high school non-matriculated	14	(1%)	17	(2%)	-18%
<b><u>County of Residence</u></b>					
Dutchess	1,011	(81%)	1,064	(81%)	-5%
Orange	72	(6%)	74	(6%)	-3%
Putnam	94	(8%)	109	(8%)	-14%
Ulster	46	(4%)	32	(2%)	44%
other N.Y.	18	(1%)	33	(3%)	-45%
outside N.Y.S.	6	(0%)	2	(0%)	200%
out of country	2	(0%)	0	(0%)	-

\* excluded from percentage calculations.

Source: 3rd week census data Argos ST0033, 2/21/17

Office of Institutional Research, Planning & Assessment, 2/23/17

y:\3rdweek\spring 2017\DCC South Profile.xls

## Reader Comment Form

The Office of Institutional Research, Planning and Assessment wants to evaluate the usefulness of its publications, and therefore we ask that you take a few minutes to give us your impressions of the Third Week Enrollment Analysis. Your comments will be used to help modify future publications in order to meet your needs. Please answer the questions below and return the survey via campus mail to the Office of Planning and Institutional Research. All responses are confidential.

1. To what extent was the information presented in the Third Week Enrollment Analysis useful to you?

Not Useful			Somewhat Useful			Very Useful
1	2	3	4	5		

2. Please briefly describe the purposes for which you use/will use the information in the Third Week Enrollment Analysis.

---

---

3. How would you rate the clarity of the following items within the Third Week Enrollment Analysis?

	Not Clear		Somewhat Clear		Very Clear
Graphs	1	2	3	4	5
Data Tables	1	2	3	4	5
Overall Presentation	1	2	3	4	5

4. How can the Third Week Enrollment Analysis be improved? (Format, graphs, new information, etc.)

---

---

Please return to *Planning & Institutional Research*. Thank you for your time and effort.